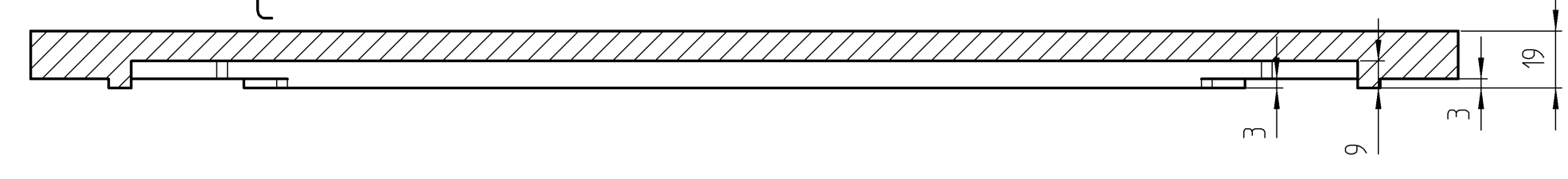
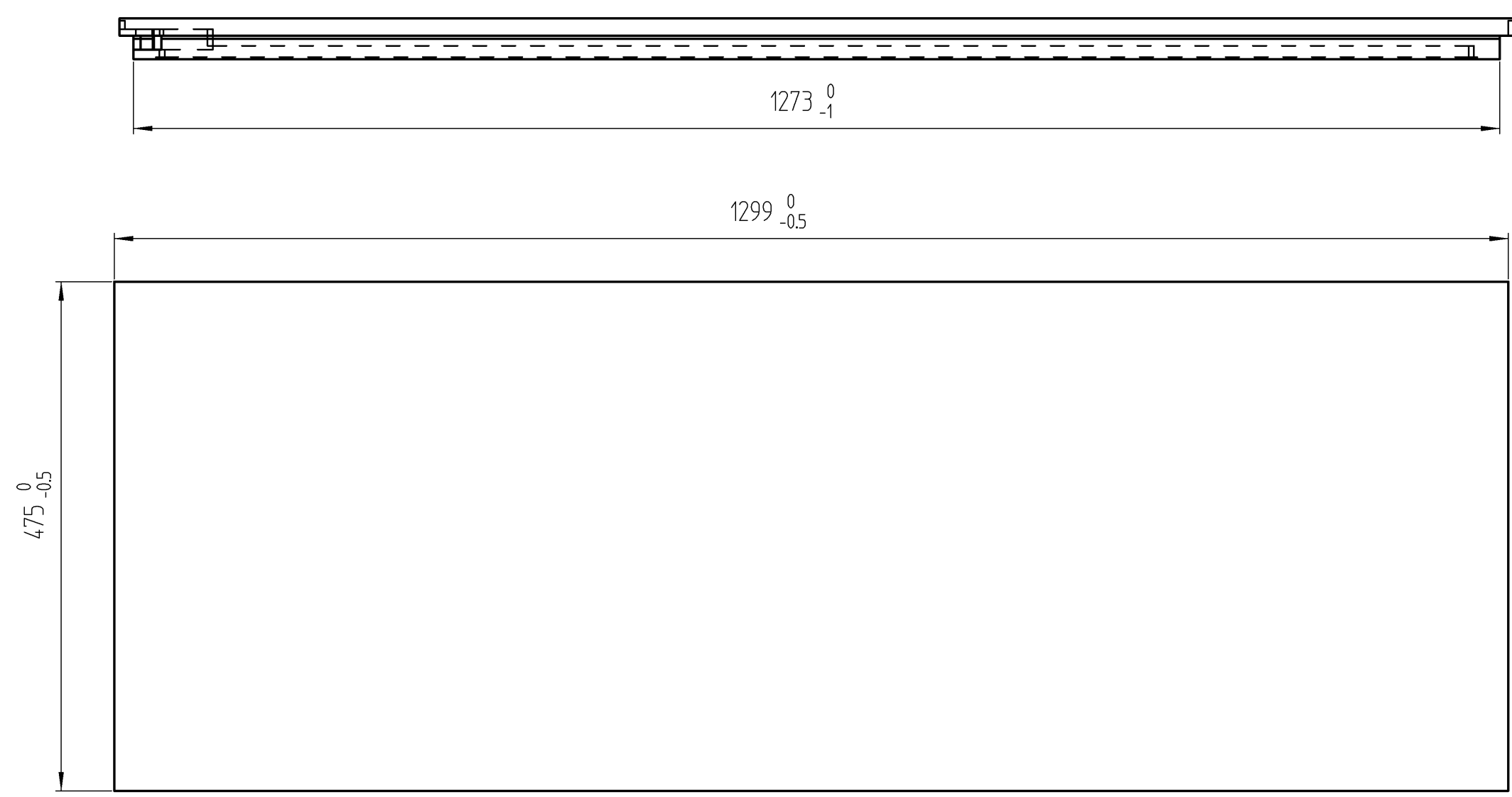
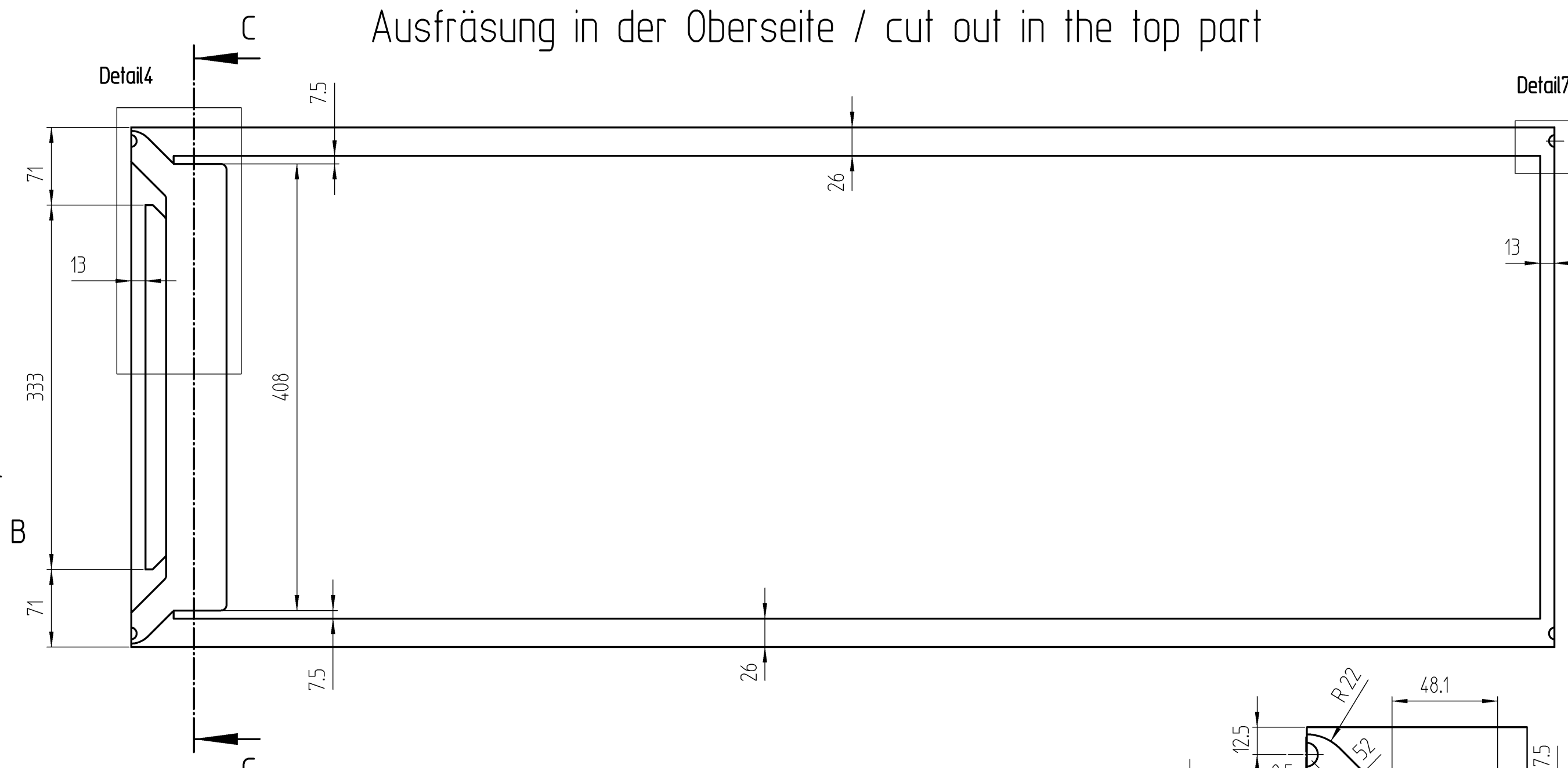
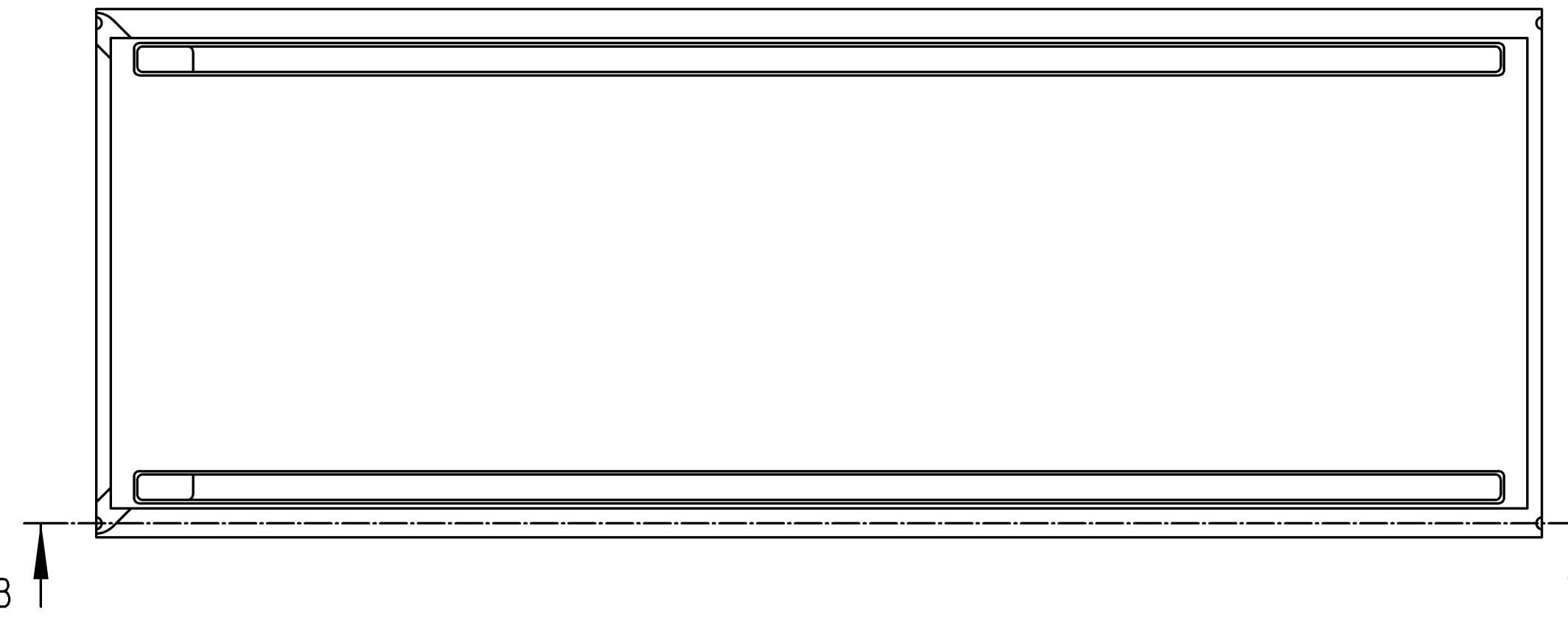
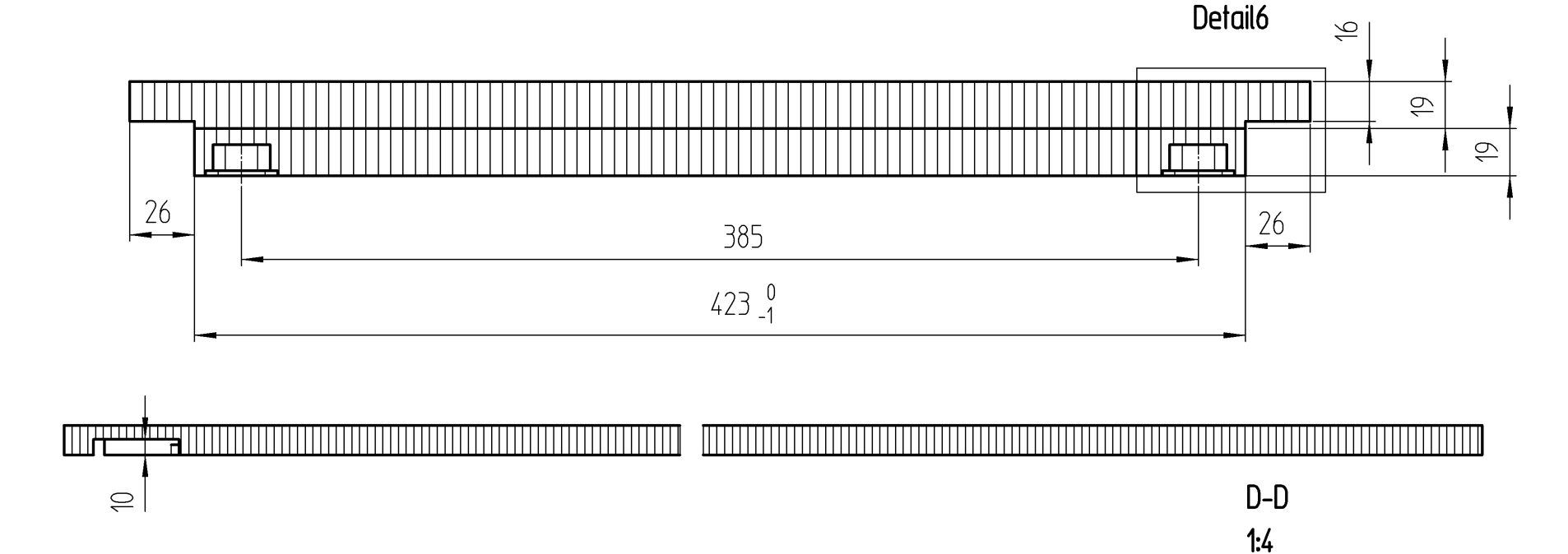
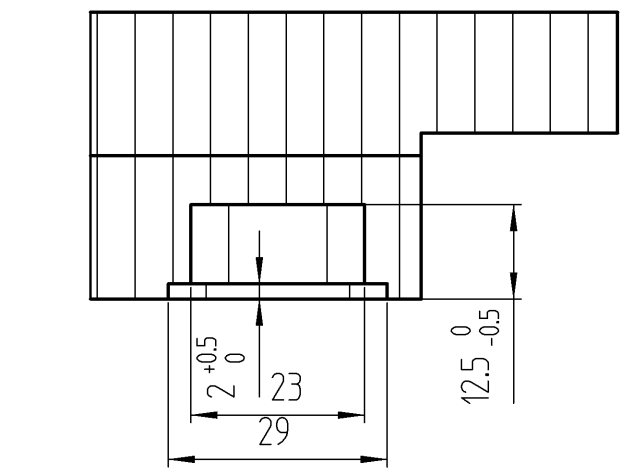
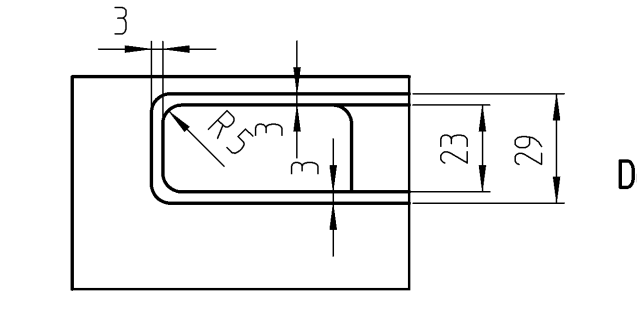
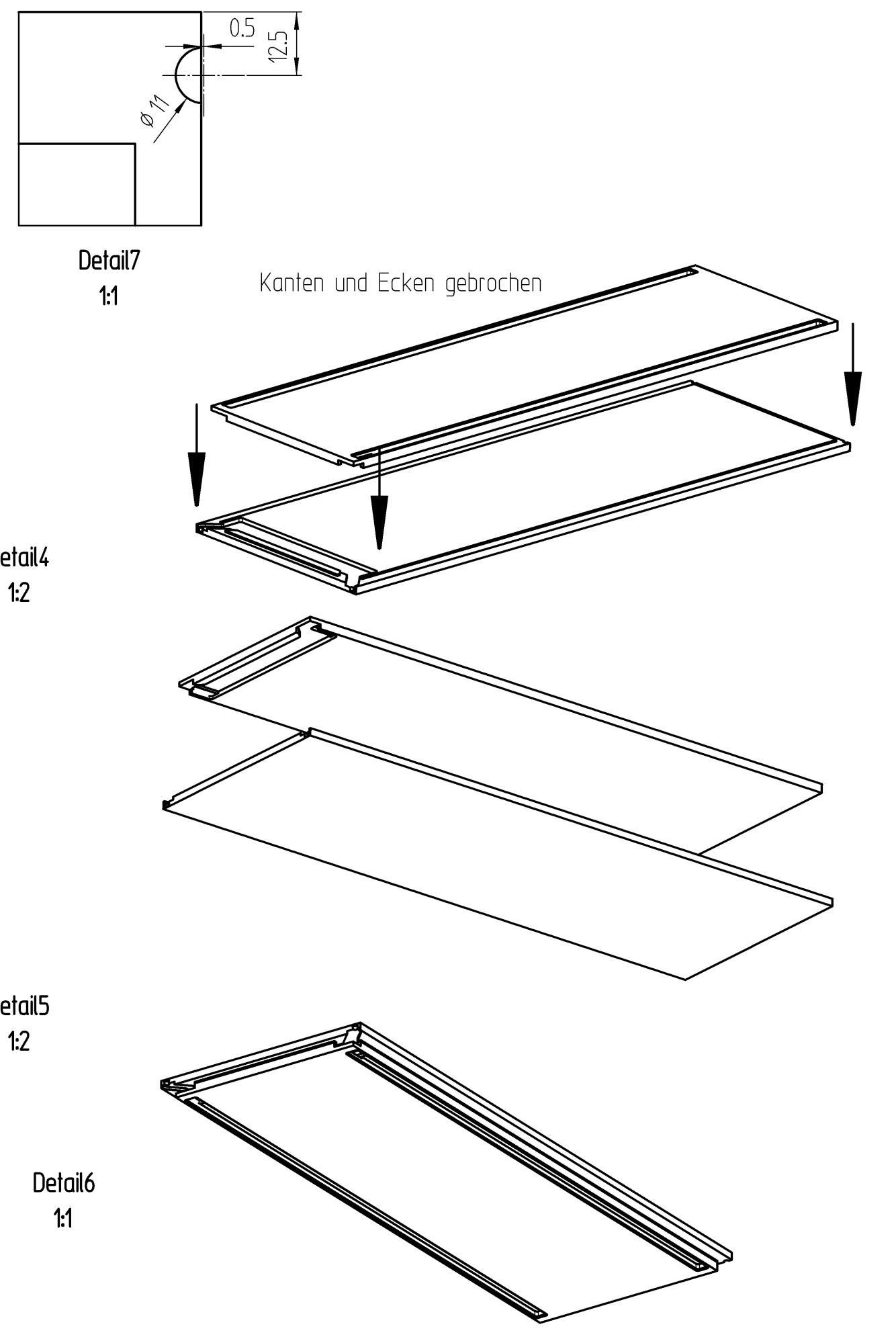
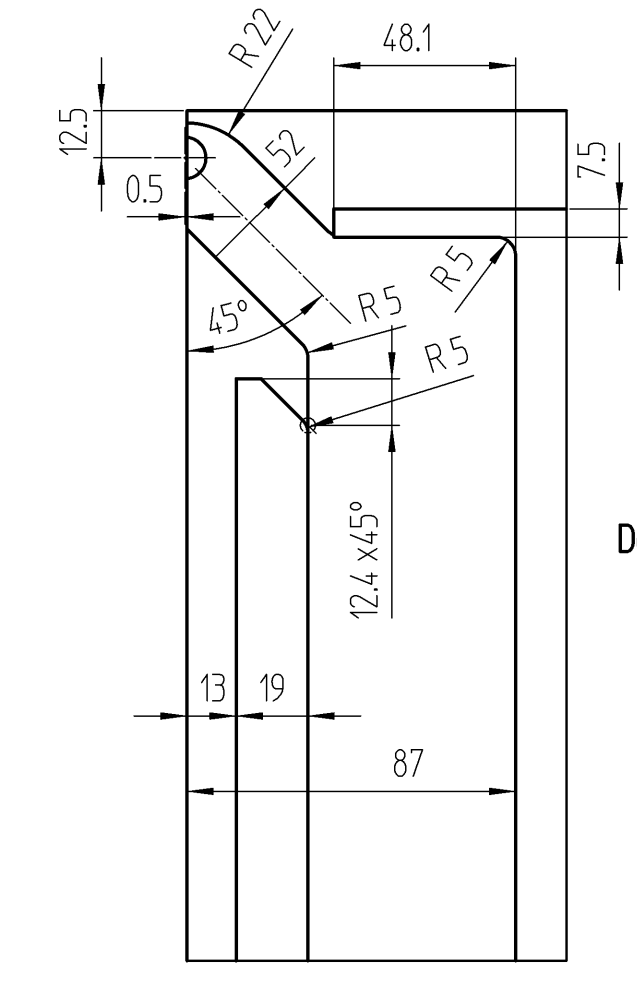
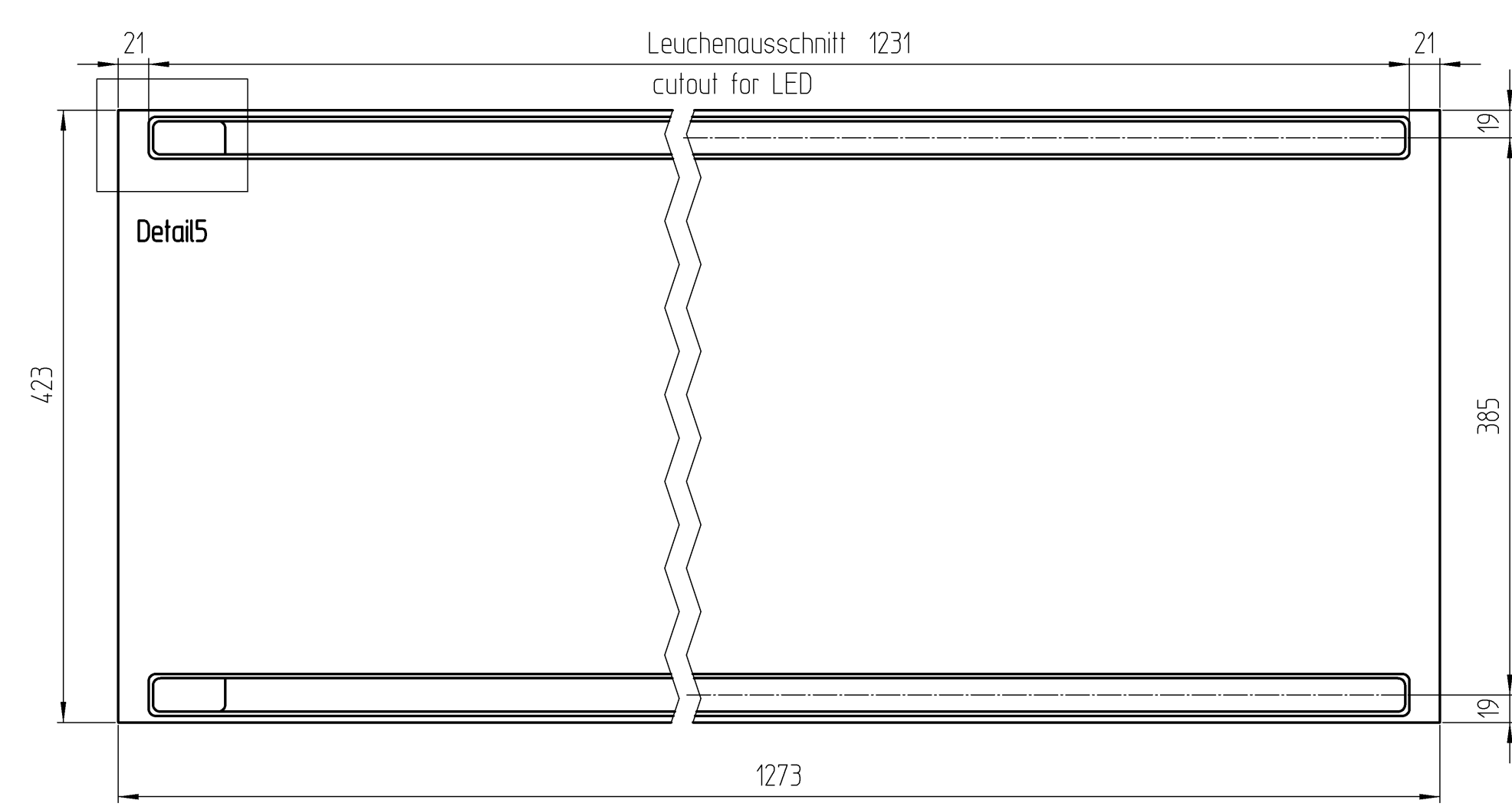


Ausfräsung in der Oberseite / cut out in the top part

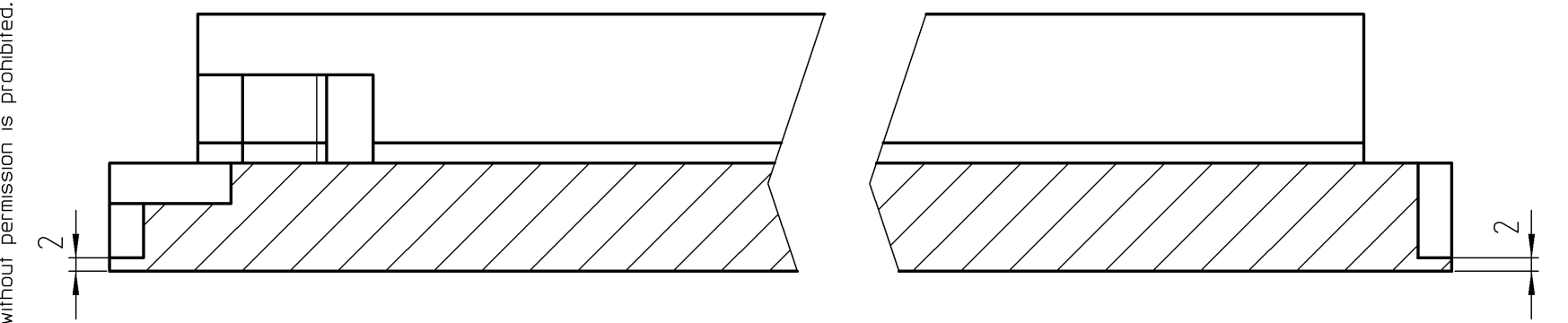
- Zweischaliger Deckel-Aufbau, mit beidseitiger Leuchte / two-part top-construction, with two-sided light.
- Verklebt oder zb. geschraubt im Leuchtenkanal / glued or for example screwed in the light channel.
- Verkabelung und Stecker finden in der Ausfräsung platz / cabling and plugs are in the cut out.
- Deckel kpl. zusammen verleimt / both parts complete glued.
- Elektrifizierung nachträglich möglich / electrification later possible.



Ausfräsung in der Unterseite / cut out in the bottom part

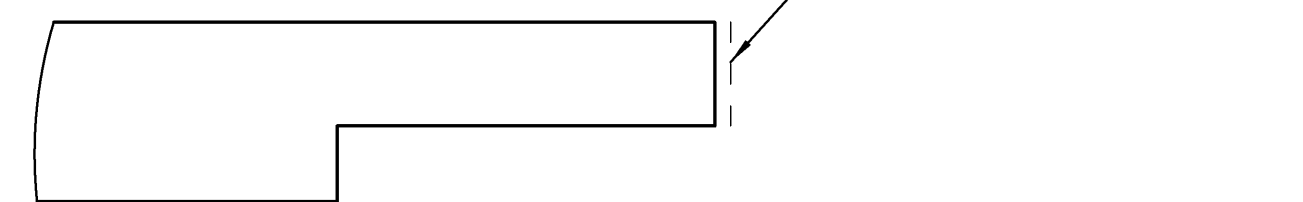


2mm sind einzuhalten, unabhängig von der Dicke der Platte



B-B 1:1

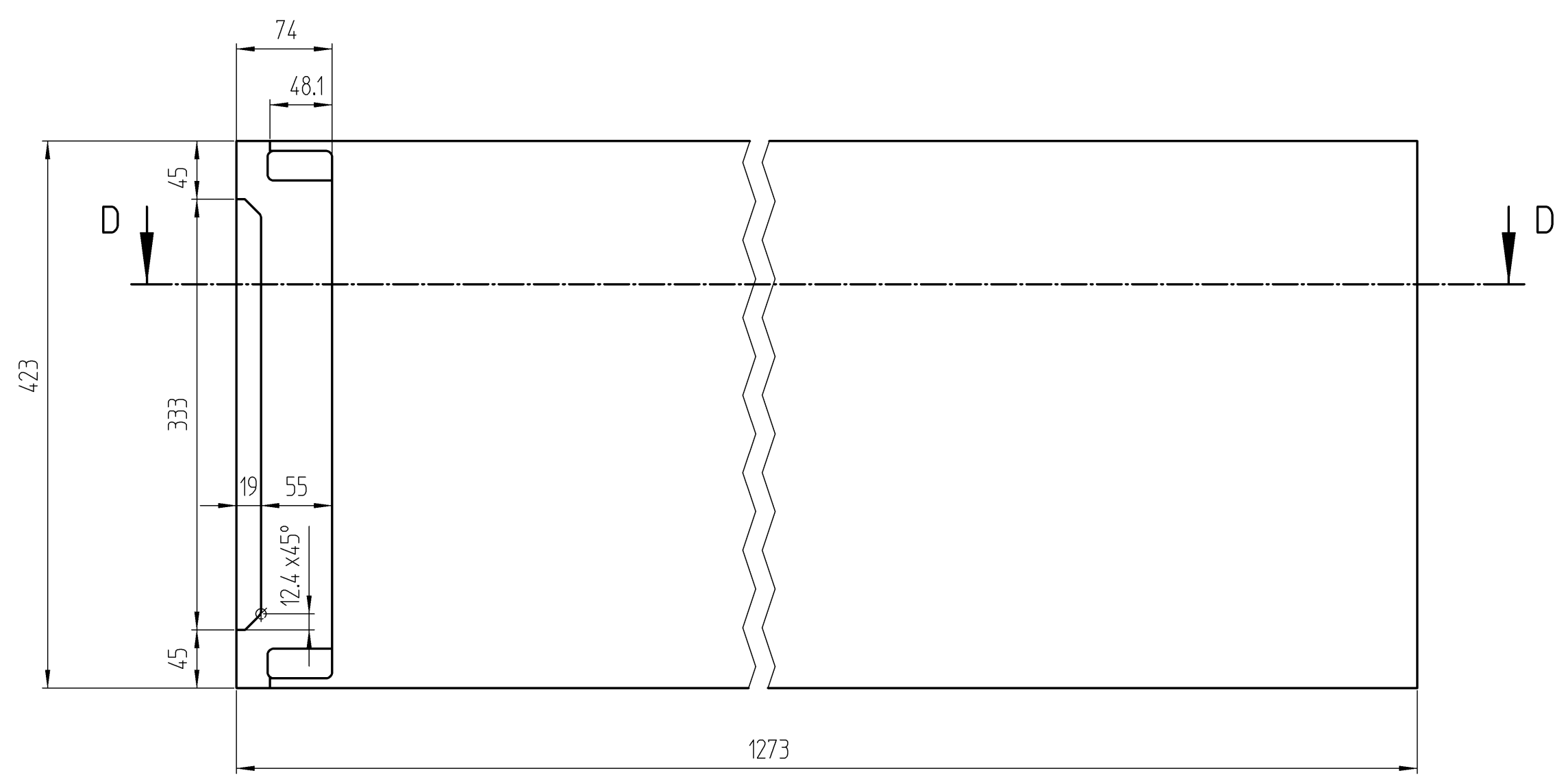
Plattenmaße alle incl. Kanten ringsum mit Kante belegt



Plattenwerkstoff und Oberfläche nach Auftrag

Definierte Schmalseiten mit Kante belegt.

Belegte Kante mit min. Radius R2mm versehen



Piece	Designation/Description	Drawing/Mat.-Nr.	Pos	Material	DIN/VBN	Remark
Changings						
A						
Used by	Date	Name	First used for	Weight/kg	15,394	Foreign designation
Designed	23.07.18	Uecker_M	Free Dim. Tol.	Main Scale		Development No.
Released	03.03.20	Renk_A	ISO 2768-mK	1:5		991-375
In Change						1 A 1/1
Replacement for						
Designation						
Abdeckboden mitte T475/A1300						
Leuchte beidseitig						
Project						
Customer 991						
www.visplay.com						
visplay						